

Village of Colfax
Streets Committee Meeting
Monday, June 29, 2020
7:00 p.m. at Village Hall
613 Main Street, Colfax, WI

Agenda

1. Call to Order
2. Roll Call
3. Streets Improvement List
4. Review Options for Repairing Streets
 - Chip Seal
 - Pulverize and Resurface
 - Resurface
 - Reconstruction – remove asphalt, base and reconstruct
5. Sidewalk Improvement List
6. Any other street discussions
7. Adjourn

Any person who has a qualifying disability as defined by the American With Disabilities Act that requires the meeting or materials at the meeting to be in an accessible location or format must contact: Lynn Niggemann Administrator-Clerk-Treasurer's Office, 613 Main Street, Colfax, (715) 962-3311 by 2:00 p.m. the day prior to the meeting so that and necessary arrangements can be made to accommodate each request.

******It is possible that members of and possibly a quorum of members of the governmental bodies of the municipality may be in attendance at the above-stated meeting to gather information- no action will be taken by any governmental body at the above-stated meeting other than the governmental body specifically referred to above in this notice.******

Village of Colfax
Capital Improvement Plan
Street Repair

Priority List	Street	Est. Cost
1	Riverview Ave. – End to Hwy 170 Street/Curb/Storm * Sanitary Water	\$311,000
2	High St. – Birch St. to Riverview Ave. Street/Curb/Storm Water * Sanitary	TBD
3	Oak St- High St. to Hwy 170 Street/Curb Sanitary	TBD
4	Amble St. – High St to University Ave./Hwy 40 Street/Curb/Storm Water Sanitary	TBD
5	High St. -Bus Garage to Cty Rd M Street/Curb Water Sanitary	TBD
6	Pine St. from First Ave. to Railroad Ave. Street/Curb Water Sanitary	\$240,425
7 3	Cedar St. from River St. to Railroad Ave. Street/Curb Water * Sanitary	\$202,948
8	Railroad Ave. from Pine St.(Hwy 40) to Cty Road M Street/Curb Stormwater OR Railroad Avenue from Pine St.(Hwy 40) to Cty Road M Street/Curb Stormwater	\$400,000 OR \$700,000

168'
336'
400'

Riverview to oak
oak to Ash
Ash to Birch

450'

355'

500'

1785'
2175'
total

Garage to new
Asphalt in front
of old Nursing
Home

TOWN OF COLFAX

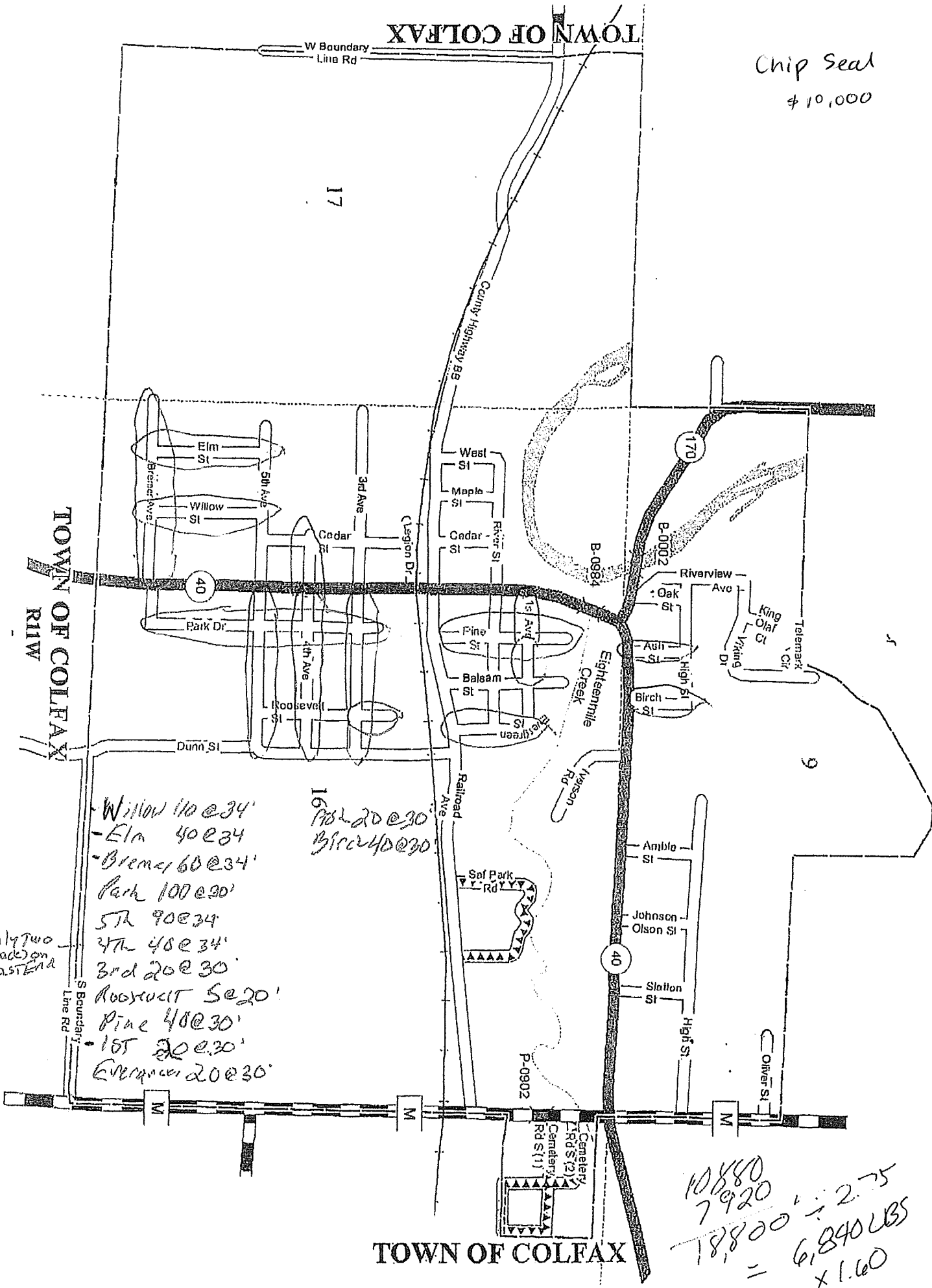
Chip Seal
\$10,000

17

TOWN OF COLFAX

TOWN OF COLFAX

RIV



- Willow 110 @ 34'
- Elm 40 @ 34'
- Bremer 60 @ 34'
- Park 100 @ 30'
- 5th 90 @ 34'
- 4th 40 @ 34'
- 3rd 20 @ 30'
- Roosevelt 5 @ 20'
- Pine 40 @ 30'
- 1st 20 @ 30'
- Evergreen 20 @ 30'

16
 P-20 @ 30'
 Birch 40 @ 30'

1/4 by two
 made on
 east end

$$\begin{aligned}
 &10800 \\
 &7920 \\
 &18800 \div 2.75 \\
 &= 6,840 \text{ LBS} \\
 &\quad \times 1.60
 \end{aligned}$$

TOWN OF COLFAX

Upstream MH 9	Downstream MH 10	Size 8	Material Concrete Pipe (non-reinforced)	Tot 	City Colfax
Surveyor's Name Caden	Certificate Number 1234567	Street Address Riverview Ave		Location Details	
Direction Downstream	Purpose	Weather	Date 20190923	Time 08:41	Length Surveyed 255.6
Additional Information					



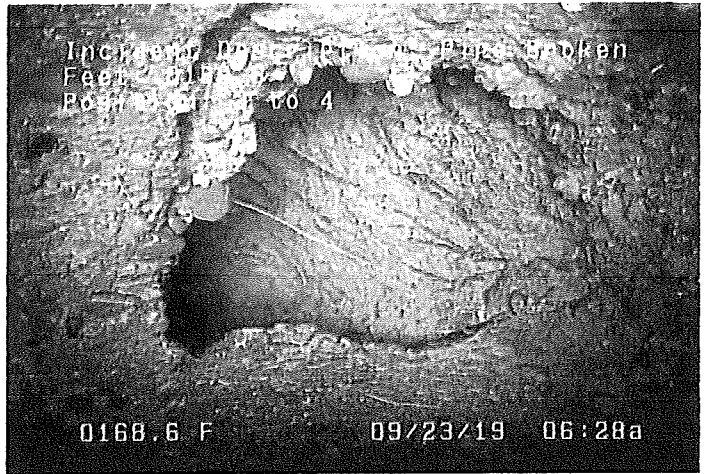
BSV - Pipe Broken: Soil Visible @ 162.3 ft.



B - Pipe Broken @ 163.0 ft.

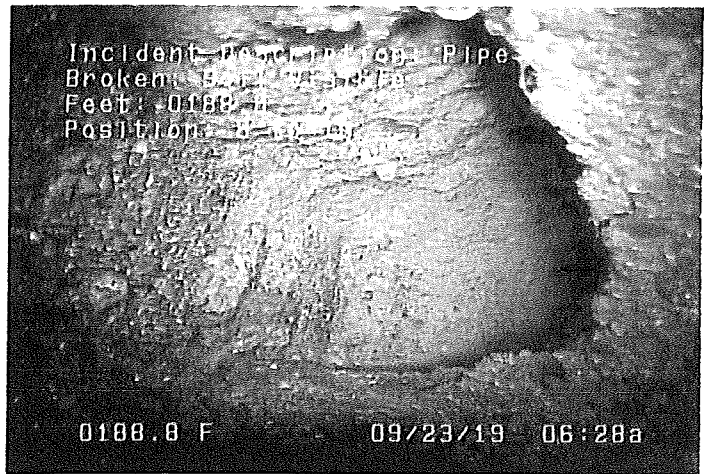


B - Pipe Broken @ 168.6 ft.



B - Pipe Broken @ 168.6 ft.

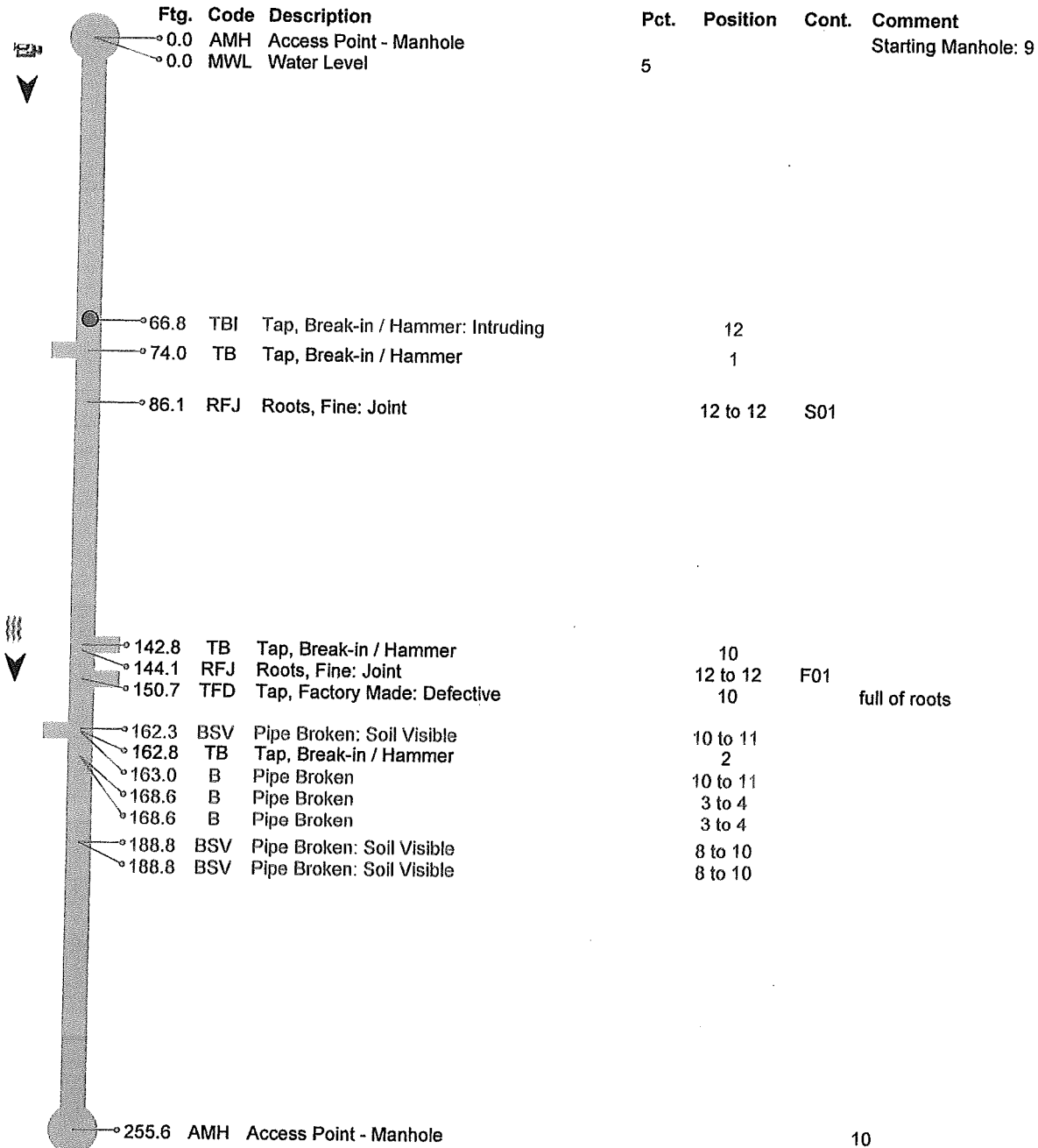
Upstream MH 9	Downstream MH 10	Size 8	Material Concrete Pipe (non-reinforced)	Total	City Colfax
Surveyor's Name Caden	Certificate Number 1234567	Street Address Riverview Ave		Location Details	
Direction Downstream	Purpose	Weather	Date 20190923	Time 08:41	Length Surveyed 255.6
Additional Information					



BSV - Pipe Broken: Soil Visible @ 188.8 ft.

BSV - Pipe Broken: Soil Visible @ 188.8 ft.

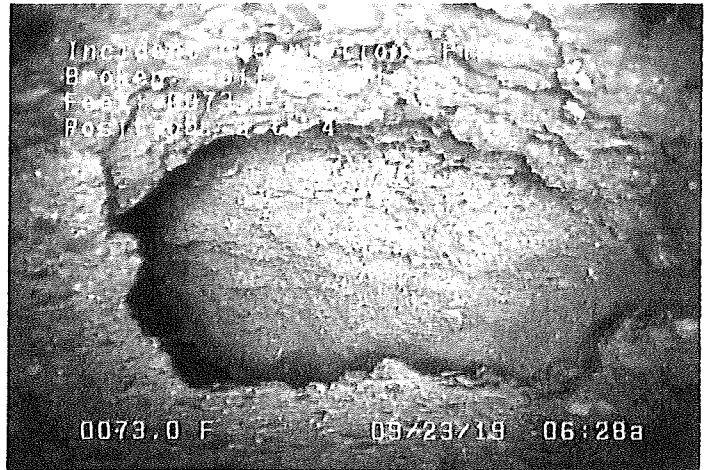
Upstream MH 9	Downstream MH 10	Size 8	Material Concrete Pipe (non-reinforced)	Total Length	City Colfax
Surveyor's Name Caden	Certificate Number 1234567	Street Address Riverview Ave	Location Details		
Direction Downstream	Purpose	Weather	Date 20190923	Time 08:41	Length Surveyed 255.6
Additional Information					



Upstream MH 10	Downstream MH 18	Size 8	Material Concrete Pipe (non-reinforced)	Total Length	City Colfax
Surveyor's Name Caden	Certificate Number 1234567	Street Address High St		Location Details	
Direction Downstream	Purpose	Weather	Date 20190923	Time 08:53	Length Surveyed 171
Additional Information					



BSV - Pipe Broken: Soil Visible @ 72.9 ft.

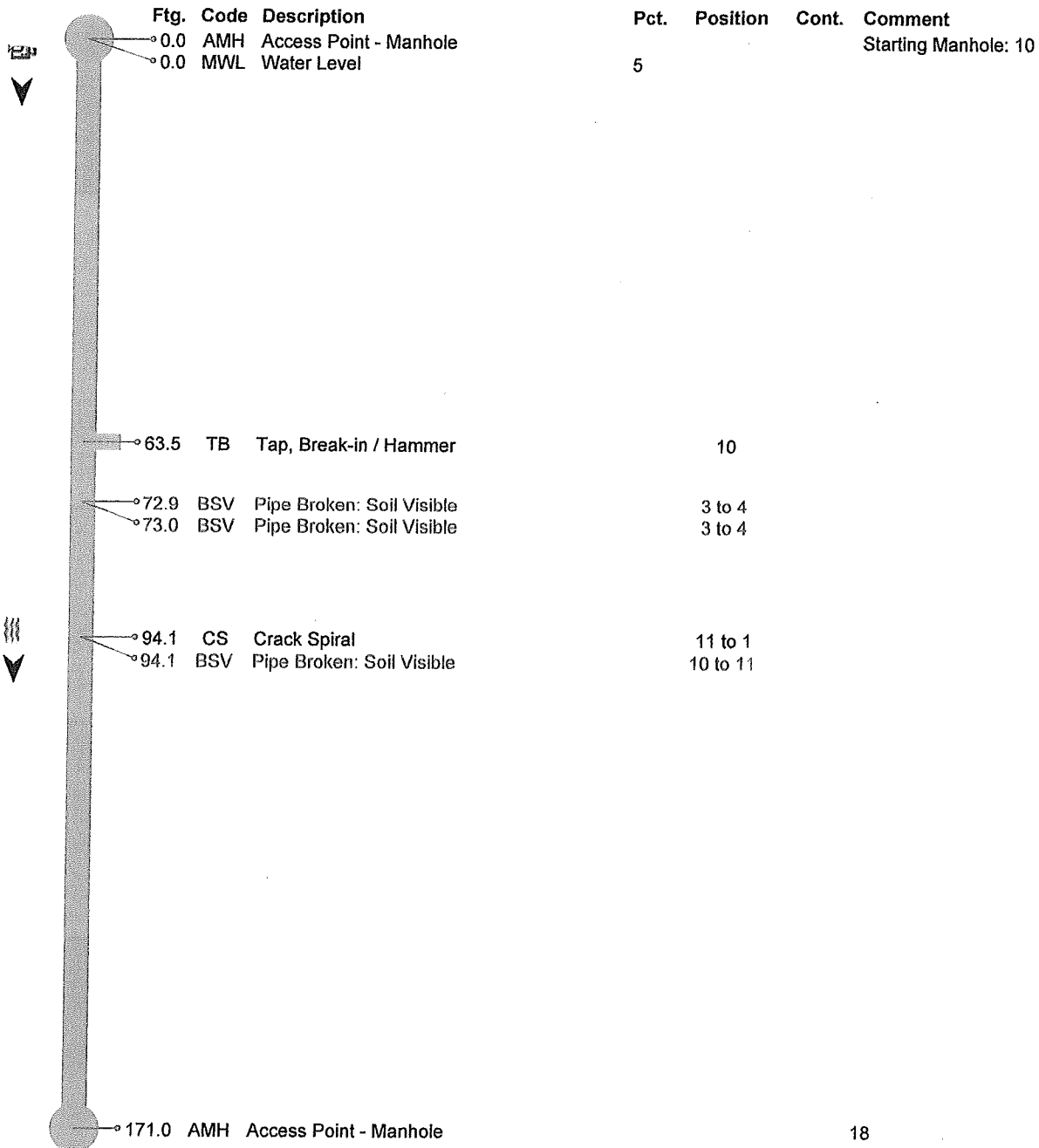


BSV - Pipe Broken: Soil Visible @ 73.0 ft.



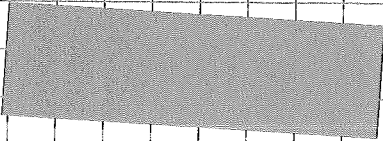
BSV - Pipe Broken: Soil Visible @ 94.1 ft.

Upstream MH 10	Downstream MH 18	Size 8	Material Concrete Pipe (non-reinforced)	Total Length	City Colfax
Surveyor's Name Caden	Certificate Number 1234567	Street Address High St		Location Details	
Direction Downstream	Purpose	Weather	Date 20190923	Time 08:53	Length Surveyed 171
Additional Information					





WERNER Electric Supply



sealers.

Crack filling .75 / lineal foot

Chip sealing 3⁰⁰ / lineal foot

Pavement Consulting Services - Tim Huebner

Asphalt \$15 / yd

Pulverize \$1 / sq yd and \$800 minimum
smaller sizes could be 1²⁵ or 1⁵⁰ / sq yd.

LOCATIONS

Cottage Grove
7450 95th Street S
Cottage Grove, MN 55016
Toll Free: 1-800-769-3701
Direct: 651-458-3701
Fax: 612-676-2578

St. Cloud
2900 First Street S
St. Cloud, MN 56301
Toll Free: 1-800-769-3705
Direct: 320-253-5440
Fax: 320-251-6560

Eau Claire
1338 N. Hastings Way
Eau Claire, WI 54703
Toll Free: 1-800-769-3704
Direct: 715-835-5176
Fax: 715-835-3936

Mankato
101 Mohr Drive
Mankato, MN 56001
Toll Free: 1-800-769-3702
Direct: 507-388-6245
Fax: 507-388-6248

La Crescent
190 Main Street
La Crescent, MN 55947
Toll Free: 1-877-855-3654
Direct: 507-895-3523
Fax: 507-895-9400

Owatonna
1000 24th Avenue NW
Owatonna, MN 55060
Toll Free: 1-800-769-3707
Direct: 507-455-1670
Fax: 507-455-0103

Rochester
3919 Hwy 14 West
Rochester, MN 55901
Toll Free: 1-800-769-3703
Direct: 507-288-3061
Fax: 507-288-4257